

meeting minutes

BRAY PROJECT NUMBER | 3495

Client Name	Mercer County School District
Project Name	District-Wide Master Plan
Project Location	Aledo, IL
Meeting Date	June 13, 2022
Meeting Location	Mercer County Intermediate School

Attendees:

Mercer County School District

Scott Petrie
Jason Monson
Tad Balmer
Don Yates
Mark Bieri

Bray Architects

John Mahon – Project Manager
Mark Miller – Project Architect
Nick Woodard – Project Architect

Reported By: Bray Architects

Purpose of Meeting: Mercer County School District and Bray Architects met to discuss the district wide master plan.

Overall Summary: Mercer County School District and Bray Architects met to review and discuss the results of the possible solution options proposed strategy for the district-wide master plan.

Meeting Minutes


Item	Description
1.0	New Boston
1.1	Nick presented an overview of the updated plans for the New Boston project which include comments and discussion from the last meeting. Two plan options were presented. The first illustrates a new gymnasium and addition which fits within the county setback regulation. A second scheme illustrated an alternate location of addition which encroaches a north setback line, which does not require modification of the existing parking lot.
1.2	Question was asked as to how bus and car traffic would be separated on these plans. A follow up question was how many buses are used at this building. Marcus stated that four at a time is the most that occurs in a lineup. The concern is that car and bus traffic will need to be separated for site safety.

- 1.3 The group discussed that additional parking is needed on the site. There is not enough parking on site and the street parking overhangs sidewalk paving. Marcus clarified that approximately 16-18 additional parking stalls are needed. There are 33 total staff on site daily. The group discussed that 40 stalls would be appropriate.
- 1.4 Parent drop-off typically consists of 6 cars in line at a time. The majority of students are bussed.
- 1.5 The consensus was to utilize the second plan option and seek an approval to encroach the property setback. This plan should include an additional parking on the east portion of the site as illustrated in the first option.
- 1.6 Discussion was held regarding the production and service of food. The question being whether the food service should be centralized or not.
- 1.7 Marcus asked if reading interventionist, social worker, math interventionist, SEL, speech are covered in this plan. These occur in a 1 on 1 up to 1 on 5 situation. Reading and Math are full time, SEL is full time, speech is shared, social worker is shared 3-4 days per week. There currently are 3 intervention rooms in the plan and the concern is whether additional should be included. It was asked if the Spec Ed rooms need to be full size. There currently are 14 in one room and 17 in another. They are typically a level 2 and are split as K-2 and 3-5. A handful of students in New Boston could be sent Bos-Ed. Bos-Ed is a collective for special education. There is an expense incurred for sending students (approx. 12), which is approximately \$50,000 per year. The number of students varies, and if the students stay in-district, there could be reimbursement of cost if this is handled in-district. These are high needs students, with multiple needs. Continued discussion occurred regarding special education spaces, programs, needs, and transportation.
- 1.8 A question was raised as to whether the gymnasium should be included in the project. There is concern that the cost of the project has increased, and the gym is approximately \$1.5M of this expense. Mark B. stated that his preference would be to include the new gym as part of this project. This could be explored further if the full board would choose to consider this.
- 1.9 Timeline was discussed. If approval to proceed is given, the project would be produced on a timeline that would have documents published for bidding in January. If a contract for construction is signed in February, then products can begin being ordered in late-February and March with the goal of starting construction in June.
- 2.0 **Apollo Elementary**
- 2.1 Nick provided a presentation of two possible solutions for a multi-purpose room addition to the Apollo Elementary which would be added to the east side of building and utilizes the existing kitchen. One solution illustrates an addition which fits within the existing available space without encroaching the existing drive lane. The second solution illustrates an addition which encroaches the existing east drive lane.
- 2.2 A comment was asked if the existing parking and driveway could be moved to the east to allow the larger addition.

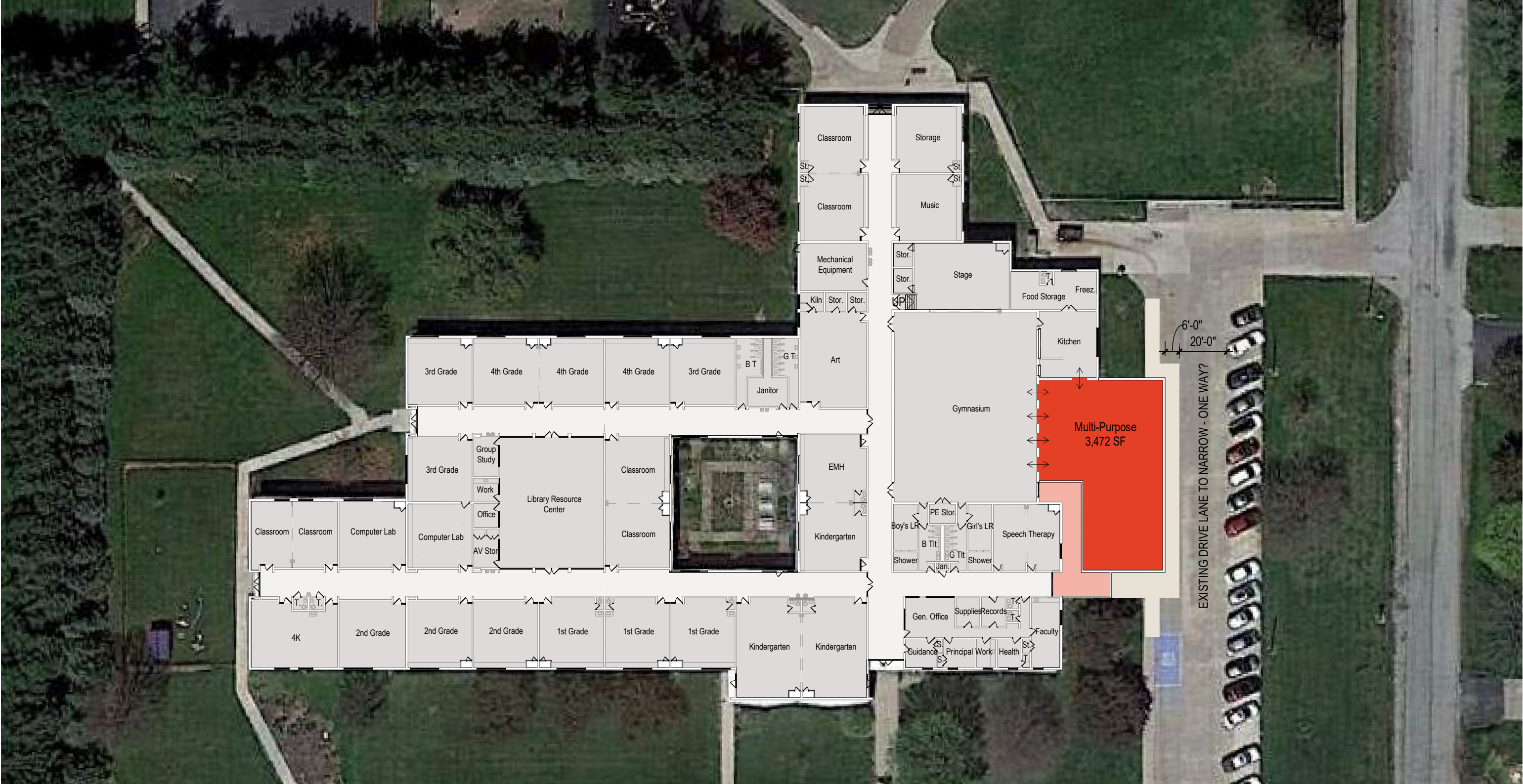
- 2.3 The room capacity allows for up to 200 students at a time in the room. This is larger than what is needed, as the school runs a continuous lunch. However, Bill F. stated that this size room would be beneficial for the building.
- 2.4 Discussion was held regarding the quantity of doors between the gym and multi-purpose room. Doors would be necessary in openings between the rooms. The quantity of doors illustrated is preferable.
- 2.5 If the addition was reduced in size, then the question is how much savings in cost. Space for approximately 140 students is needed for lunch. For an indoor recess, approximately 150 student capacity is needed.
- 2.6 A timeline for a project would be to bid this in the winter. The production for assembling bid documents would not be as lengthy. It is estimated that total duration of construction could be 8 – 12 months depending on ordering of materials. The group discussed that the New Boston and Apollo projects could be combined together for a single bid construction bid package.
- 3.0 High School**
- 3.1 Nick presented four possible schemes for potential replacement of educational and vocational portions of the existing high school building. These solutions are from a high-level master planning approach, with the intent of generating discussion of how to best consider envisioning a change to the high school campus.
- 3.2 Comment was made that if a project was to occur at the high school, then a cafeteria remodel would be necessary. The cafeteria is in need of update, and a new vision would be desired for this space. Approximately 3,500 sq. ft. of space is needed for a total cafeteria size.
- 3.3 It was questioned if the high school should occur as a single project or series of multiple projects. Discussion was held as the best ways to approach a high school process.
- 4.0 Next Steps**
- 4.1 Next meeting is July 11 at 6:30pm.

The above information is the interpretation of the meeting activities and comments; and should be reviewed by all attendees. Please comment on any discrepancies and inform the writer as soon as possible of any changes required.

Date issued: Tuesday | June 15, 2022
Bray Associates Architects, Inc.


John A. Mahon, AIA, NCARB
Project Team Leader Architect + Associate

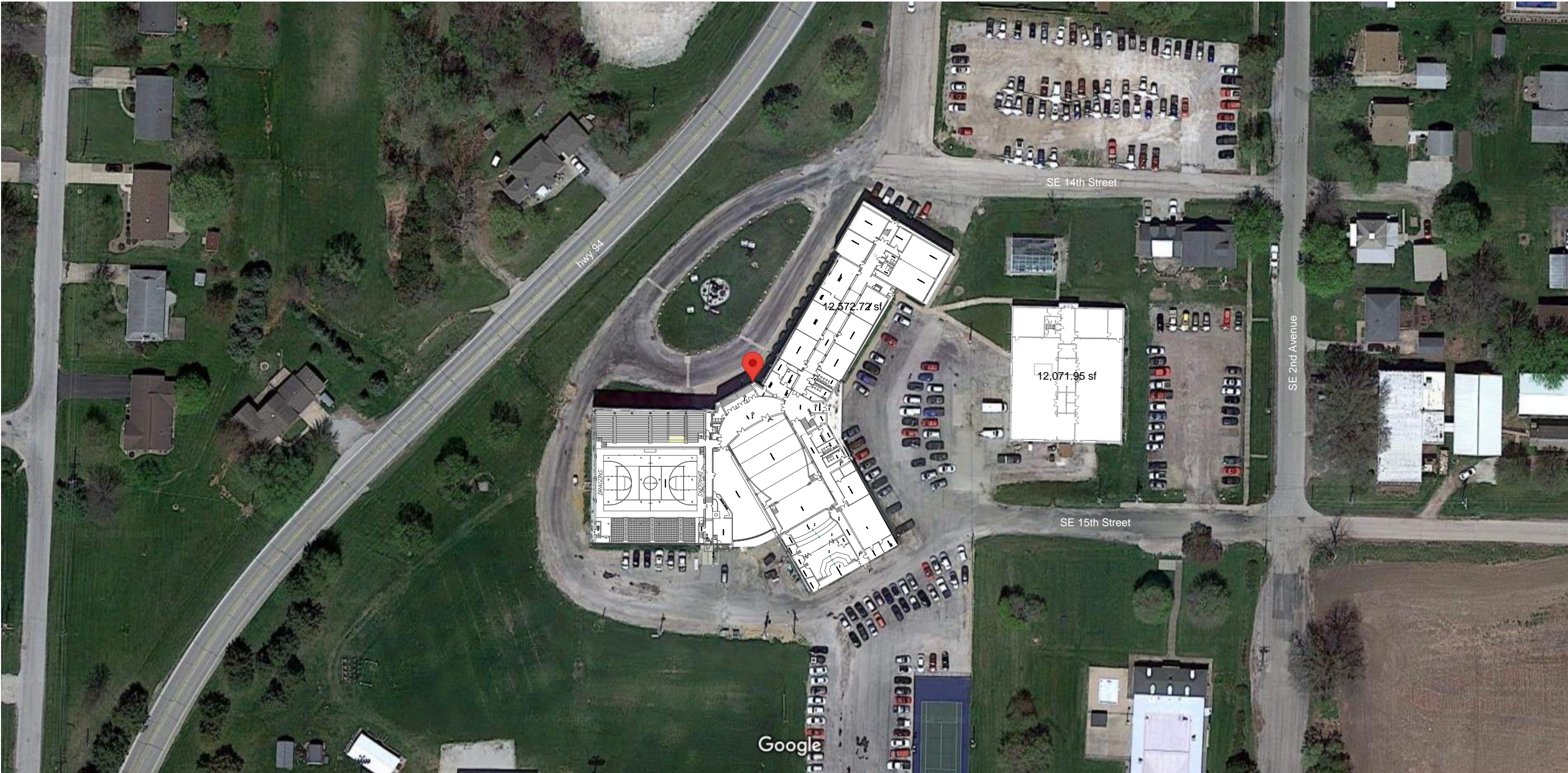
OPTION 2 - Apollo Elementary



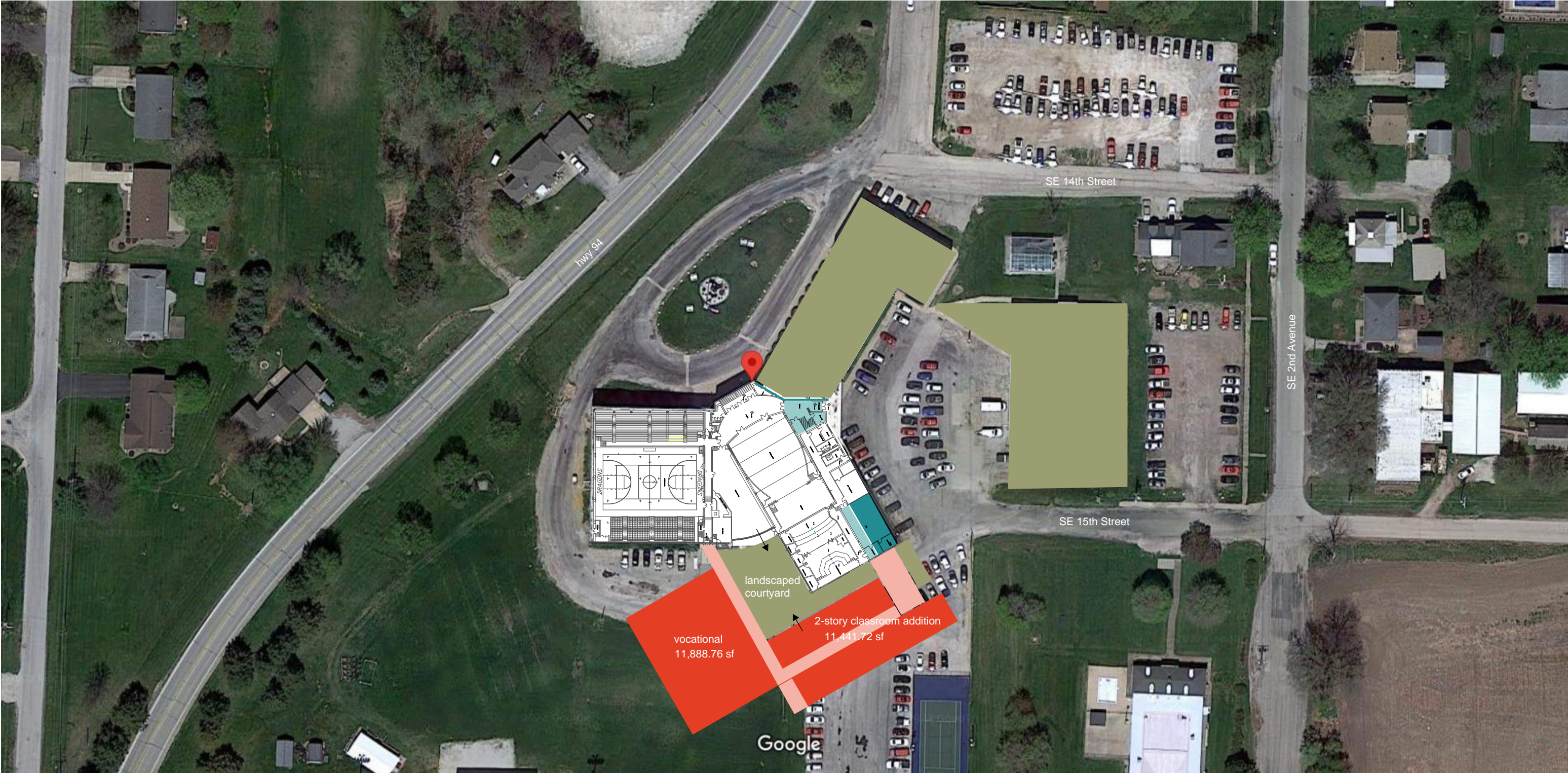
Apollo Elementary



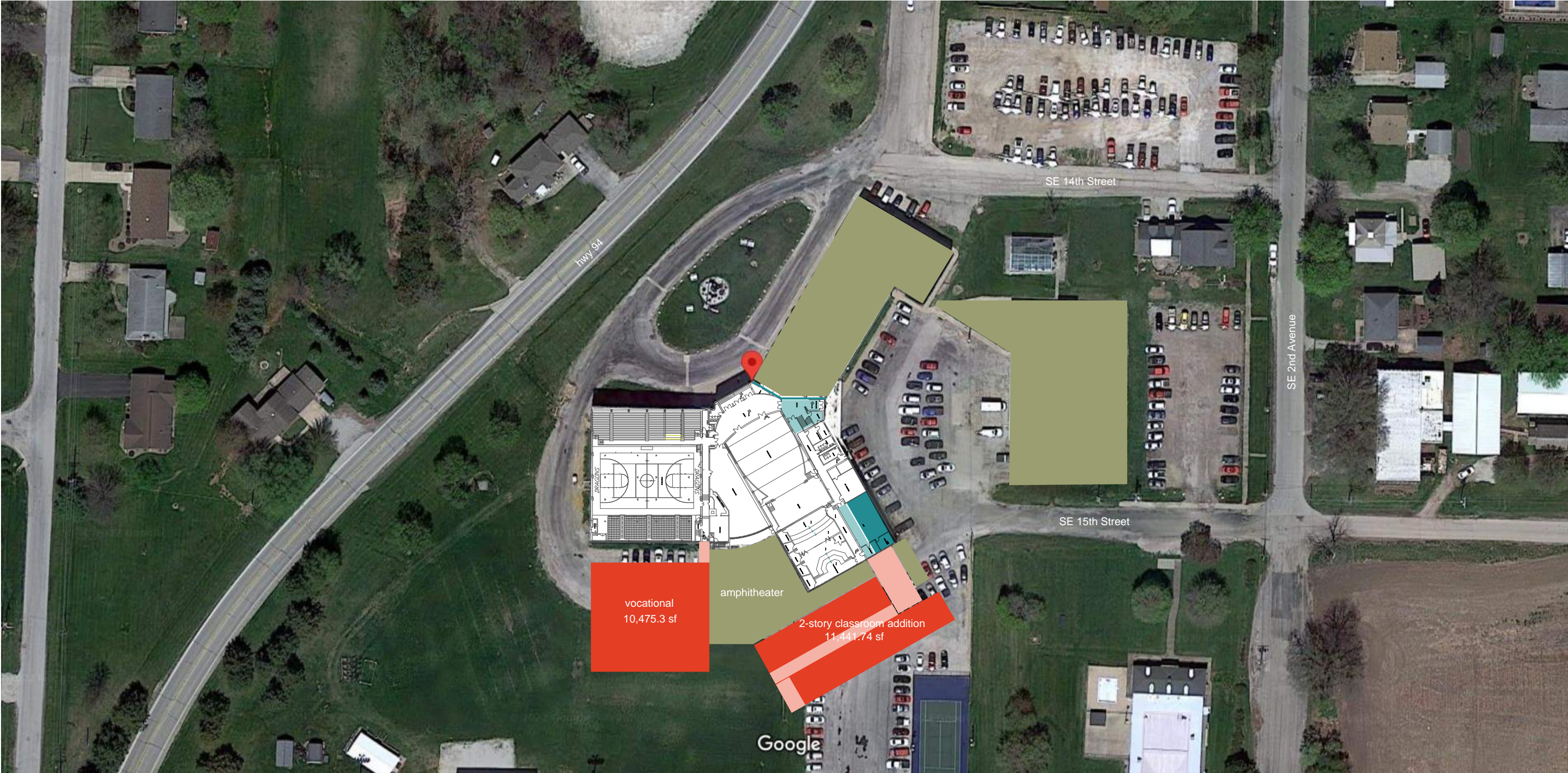
SCHEMATIC DESIGN - MERCER COUNTY HIGH SCHOOL



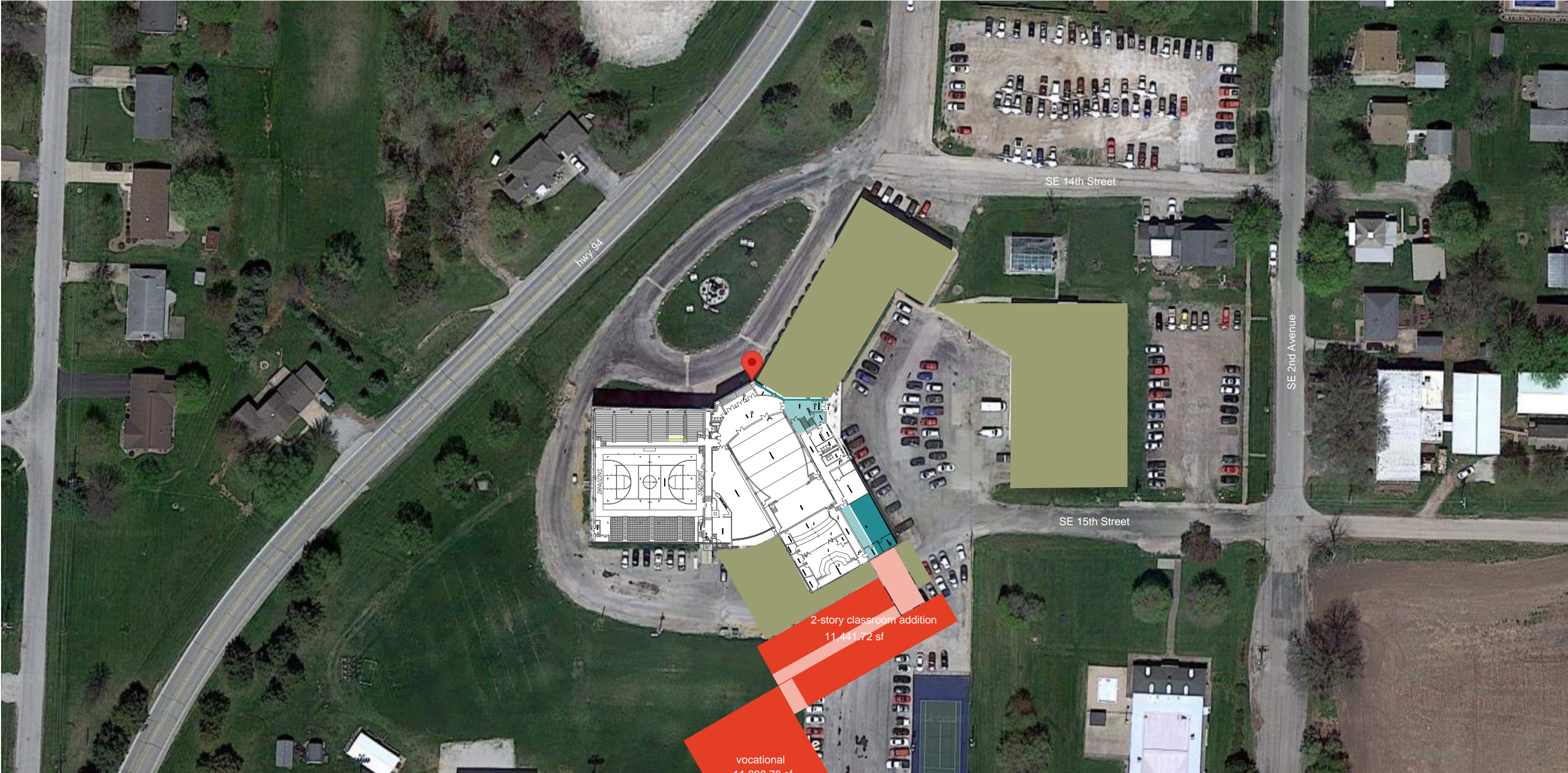
SCHEMATIC DESIGN - MERCER COUNTY HIGH SCHOOL - OPTION 1



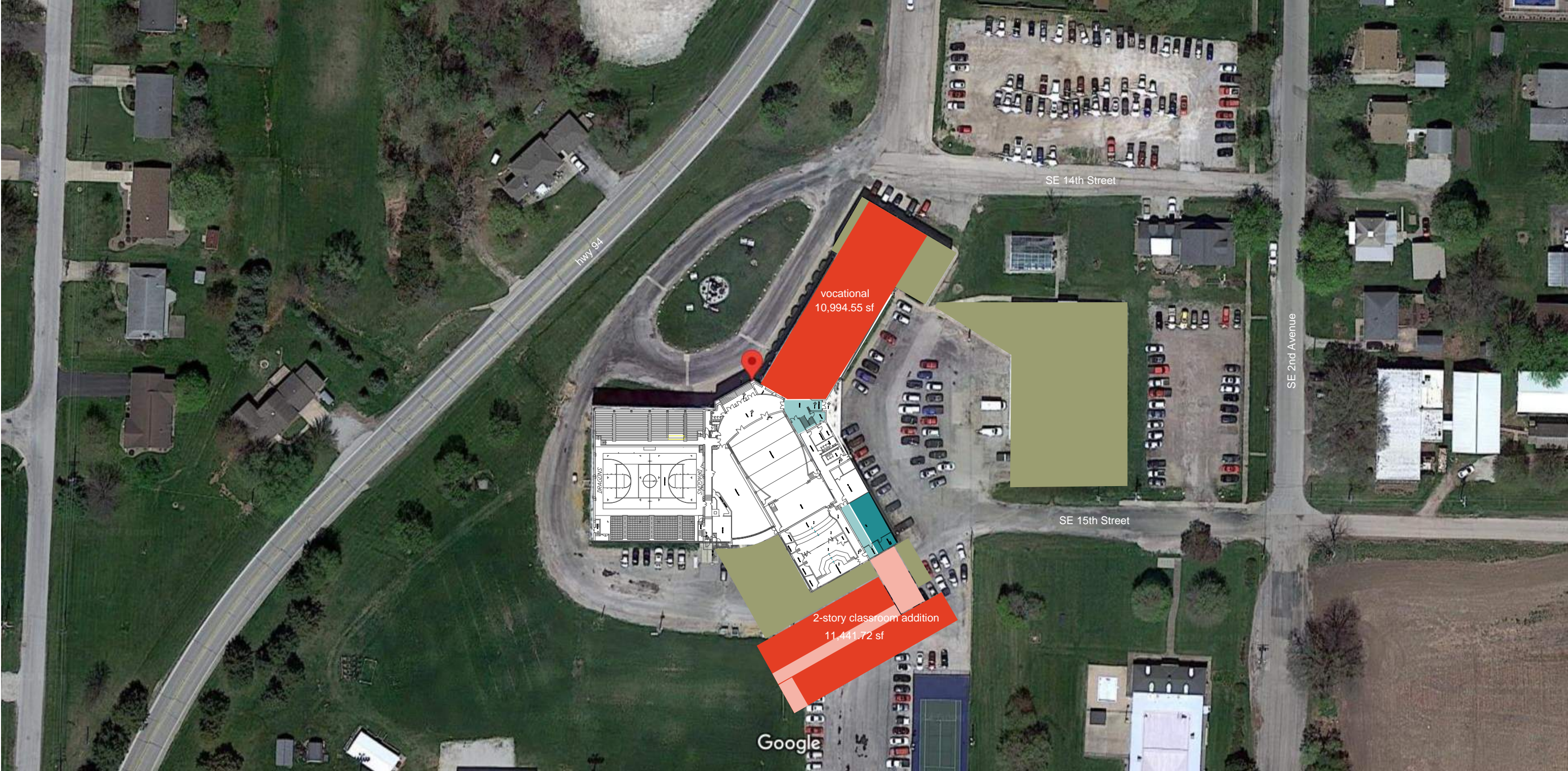
SCHEMATIC DESIGN - MERCER COUNTY HIGH SCHOOL - OPTION 2



SCHEMATIC DESIGN - MERCER COUNTY HIGH SCHOOL - OPTION 3



SCHEMATIC DESIGN - MERCER COUNTY HIGH SCHOOL - OPTION 4



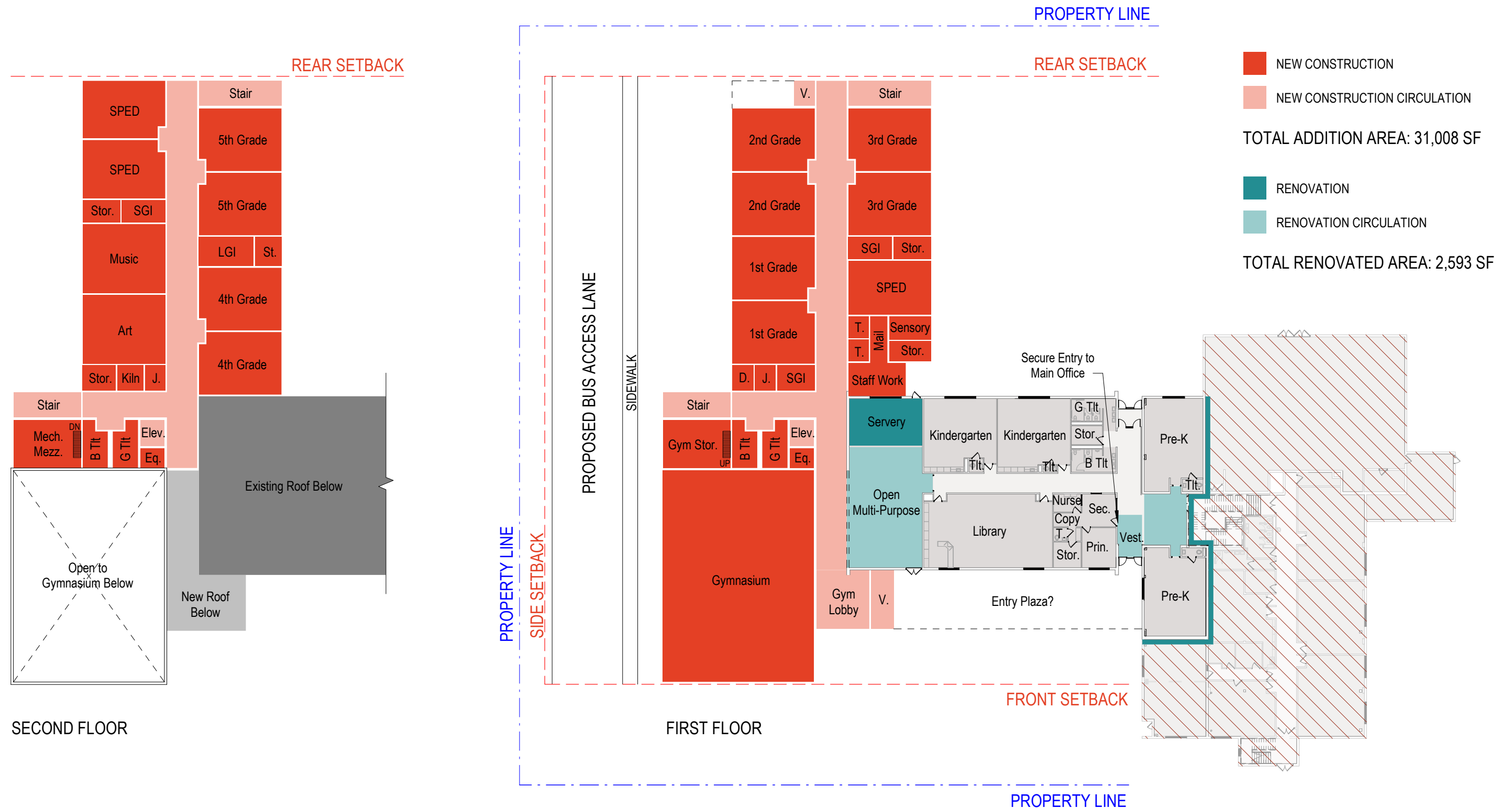
SCHEMATIC DESIGN - MERCER COUNTY HIGH SCHOOL



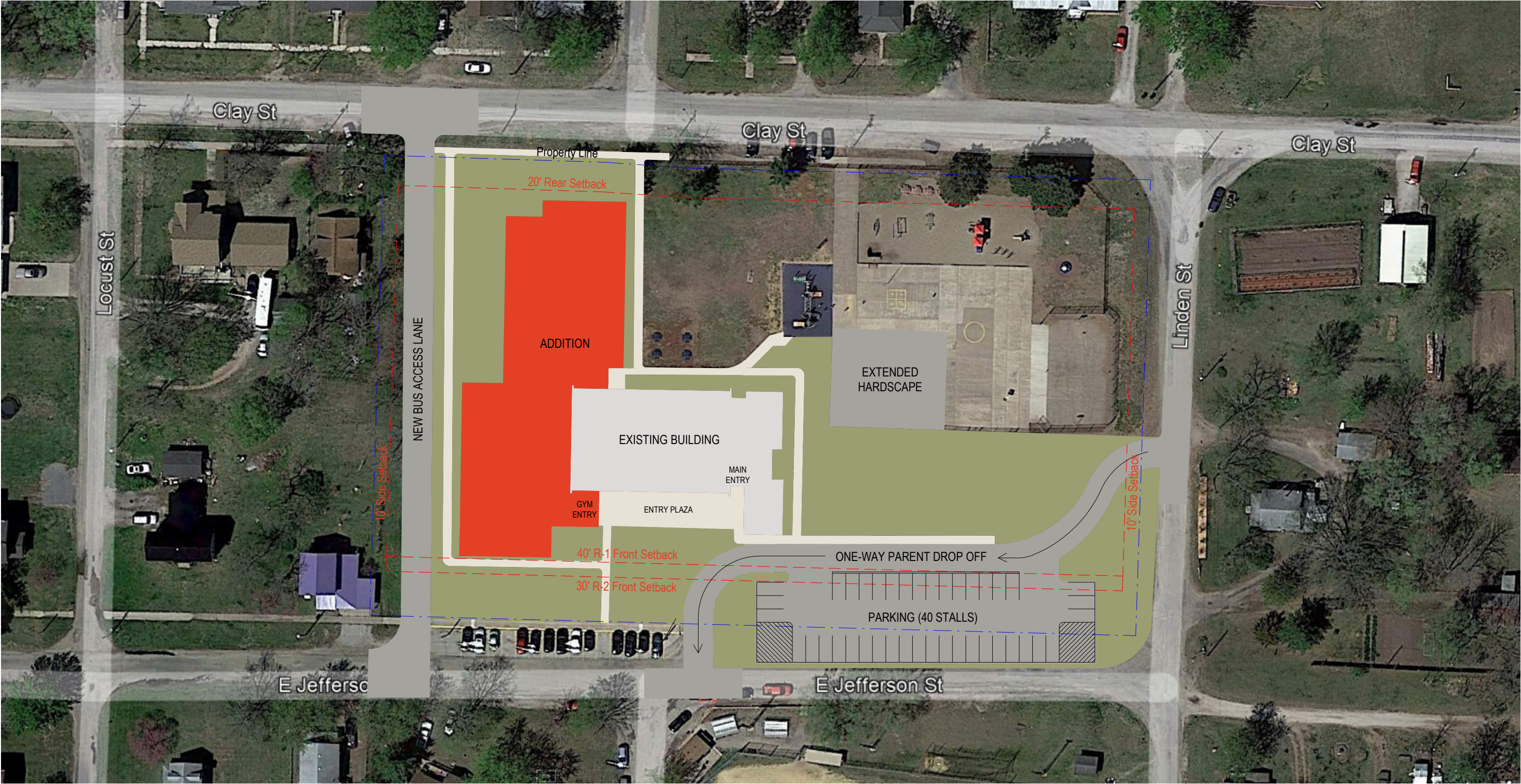
SCHEMATIC DESIGN - MERCER COUNTY HIGH SCHOOL



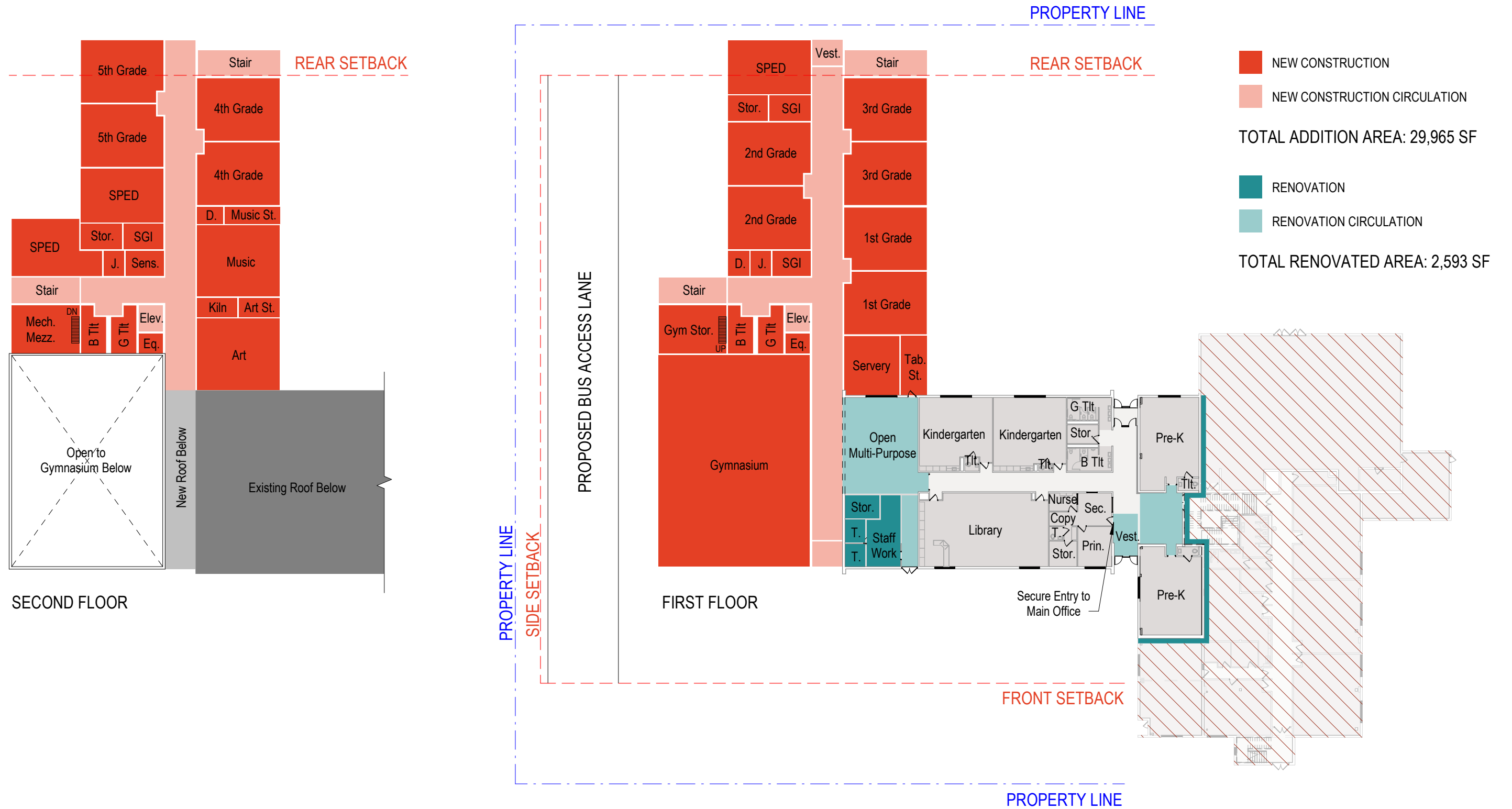
FLOOR PLAN - OPTION 4 - NEW BOSTON ELEMENTARY



SITE - OPTION 4 - NEW BOSTON ELEMENTARY



FLOOR PLAN - OPTION 5 - NEW BOSTON ELEMENTARY



SITE - OPTION 5 - NEW BOSTON ELEMENTARY



SITE - NEW BOSTON ELEMENTARY

